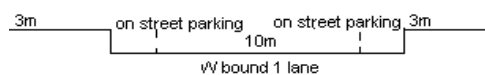
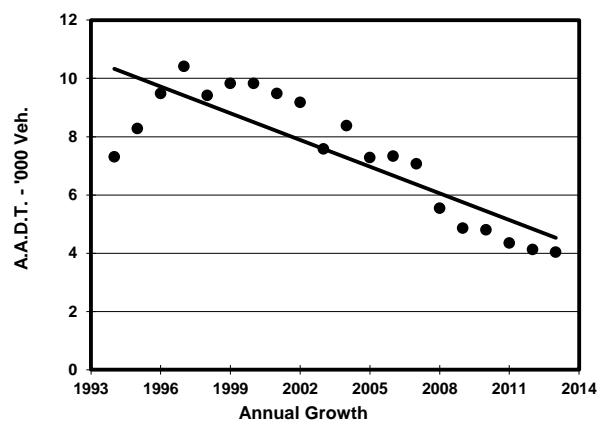
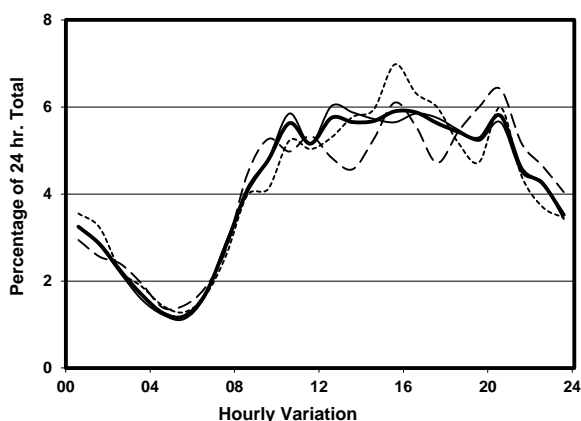
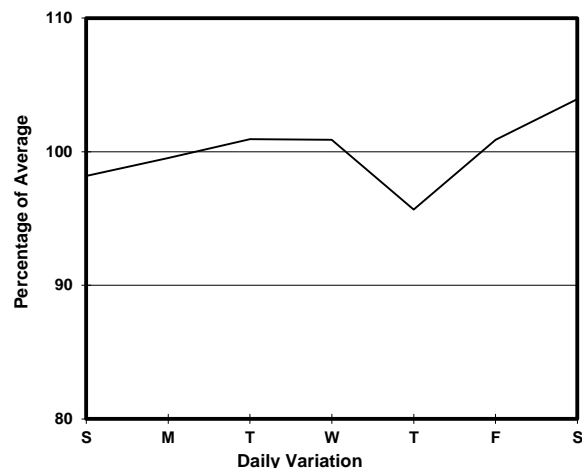
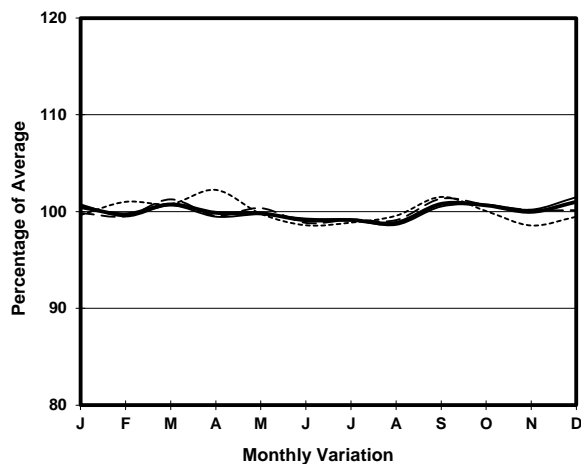


YEAR 2013  
 COVERAGE (B) STATION 4403  
 ROAD NETWORK MINOR  
 ROAD TYPE LOCAL DISTRIBUTOR

LINK SOY ST (from SAI YEUNG CHOI ST S to YIM PO FONG ST)



## 1. TRAFFIC FLOW VARIATION AND GROWTH



## 2. TRAFFIC CHARACTERISTICS (BY DIRECTION)

Parameter	All - Day	Mon. - Fri.	Sat.	Sun.
<b>WEST BOUND</b>				
A.A.D.T.	4040	4020	4200	3970
R 12 / 24 - %	62.4	63.1	59.2	62.4
R 16 / 24 - %	82.3	82.7	81.5	81.3
AM Peak Hour	0900-1000	0900-1000	0900-1000	0900-1000
One-way flow at AM peak hour	190	190	220	160
T - % (AM)	-	4.9	-	-
PM Peak Hour	1600-1700	1600-1700	1600-1700	1600-1700
One-way flow at PM peak hour	240	240	230	250
T - % (PM)	-	1.7	-	-
Prop.of commercial vehicles - 16 hr.	-	-	-	-
 A.A.D.T.	-	-	-	-
R 12 / 24 - %	-	-	-	-
R 16 / 24 - %	-	-	-	-
AM Peak Hour	-	-	-	-
One-way flow at AM peak hour	-	-	-	-
T - % (AM)	-	-	-	-
PM Peak Hour	-	-	-	-
One-way flow at PM peak hour	-	-	-	-
T - % (PM)	-	-	-	-
Prop.of commercial vehicles - 16 hr.	-	-	-	-

## 3. OTHER INFORMATION AND COMMENT

**4. Vehicle classification and occupancy - Monday to Friday**

Time		Class of vehicle									
		Motor	Private	Taxi	Private	PLB	Goods veh.		Non	Fr. Bus	
		Cycle	Car		LB		Light	M & H	Fr. Bus	SD	DD
0700-0800	Pro	0.0	10.0	15.0	10.0	35.0	25.0	0.0	5.0	0.0	0.0
	Ocp	0.0	2.5	2.7	12.0	7.1	2.6	0.0	1.0	0.0	0.0
0800-0900	Pro	2.2	17.8	28.9	2.2	33.3	11.1	0.0	4.4	0.0	0.0
	Ocp	1.0	1.8	1.3	1.0	9.5	1.4	0.0	9.5	0.0	0.0
0900-1000	Pro	7.3	9.8	34.1	0.0	26.8	17.1	0.0	4.9	0.0	0.0
	Ocp	1.0	1.0	1.4	0.0	8.5	1.3	0.0	3.0	0.0	0.0
1000-1100	Pro	3.6	16.4	38.2	0.0	16.4	18.2	1.8	5.5	0.0	0.0
	Ocp	1.5	1.6	1.5	0.0	8.0	1.5	3.0	3.3	0.0	0.0
1100-1200	Pro	1.6	15.9	47.6	0.0	15.9	14.3	1.6	3.2	0.0	0.0
	Ocp	1.0	1.1	1.4	0.0	7.8	1.6	2.0	43.5	0.0	0.0
1200-1300 Peak hour	Pro	3.7	20.4	31.5	0.0	9.3	29.6	1.9	3.7	0.0	0.0
	Ocp	1.0	1.5	1.4	0.0	10.2	1.6	1.0	23.0	0.0	0.0
1300-1400	Pro	7.3	27.3	40.0	0.0	18.2	5.5	0.0	1.8	0.0	0.0
	Ocp	1.3	1.6	1.7	0.0	6.7	1.0	0.0	11.0	0.0	0.0
1400-1500	Pro	3.7	18.5	44.4	0.0	16.7	13.0	0.0	3.7	0.0	0.0
	Ocp	1.0	1.1	1.6	0.0	8.4	2.3	0.0	6.0	0.0	0.0
1500-1600	Pro	3.1	30.8	32.3	3.1	9.2	16.9	1.5	3.1	0.0	0.0
	Ocp	1.0	1.6	1.9	4.5	8.0	2.0	4.0	3.0	0.0	0.0
1600-1700	Pro	3.4	31.0	22.4	1.7	8.6	31.0	0.0	1.7	0.0	0.0
	Ocp	1.0	1.4	2.3	5.0	9.8	1.3	0.0	3.0	0.0	0.0
1700-1800	Pro	9.5	50.8	11.1	0.0	6.4	17.5	1.6	3.2	0.0	0.0
	Ocp	1.2	1.6	2.4	0.0	9.5	2.1	1.0	2.5	0.0	0.0
1800-1900	Pro	7.4	33.3	25.9	0.0	9.3	16.7	0.0	7.4	0.0	0.0
	Ocp	1.0	1.5	2.0	0.0	7.0	1.9	0.0	1.0	0.0	0.0
1900-2000	Pro	9.8	56.9	25.5	0.0	5.9	2.0	0.0	0.0	0.0	0.0
	Ocp	1.4	1.7	2.9	0.0	8.0	2.0	0.0	0.0	0.0	0.0
2000-2100	Pro	3.7	35.2	27.8	0.0	18.5	5.6	0.0	9.3	0.0	0.0
	Ocp	1.0	1.4	1.8	0.0	7.8	2.0	0.0	10.4	0.0	0.0
2100-2200	Pro	7.4	38.9	27.8	0.0	13.0	5.6	0.0	7.4	0.0	0.0
	Ocp	1.3	2.0	2.5	0.0	10.4	1.3	0.0	13.0	0.0	0.0
2200-2300	Pro	4.9	19.5	48.8	0.0	14.6	4.9	0.0	7.3	0.0	0.0
	Ocp	1.5	1.5	1.7	0.0	4.8	1.5	0.0	9.7	0.0	0.0
16 hours	Pro	5.1	28.3	31.7	0.7	14.8	14.5	0.6	4.4	0.0	0.0
	Ocp	1.2	1.5	1.8	6.5	8.2	1.7	2.2	9.5	0.0	0.0

**Legend**

**Pro.** Proportion of vehicles in % (Sum may not add up to 100% due to figure rounding)  
**Ocp.** Average occupancy of vehicles  
**M&H** Medium and Heavy